

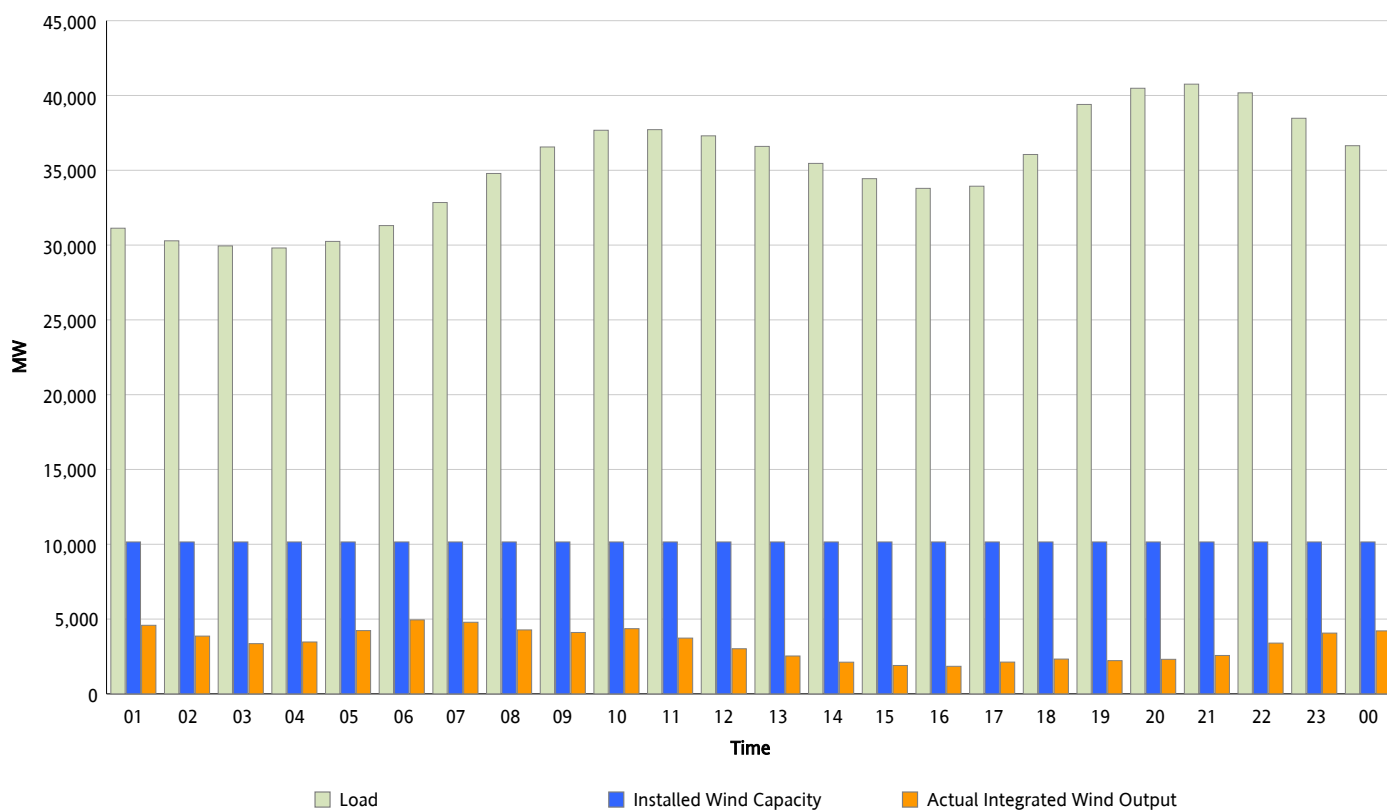


ERCOT Grid Operations

Wind Integration Report : 01/13/2013

Peak Load	40,756 MW
Load Peak Hour (HE)	21
Wind Over Peak	2,567 MW
Wind Record 12/25/12	8,638 MW
Max Wind Value*	5,105 MW
Wind Peak Time	00:02
Wind Integration %	16.16 %

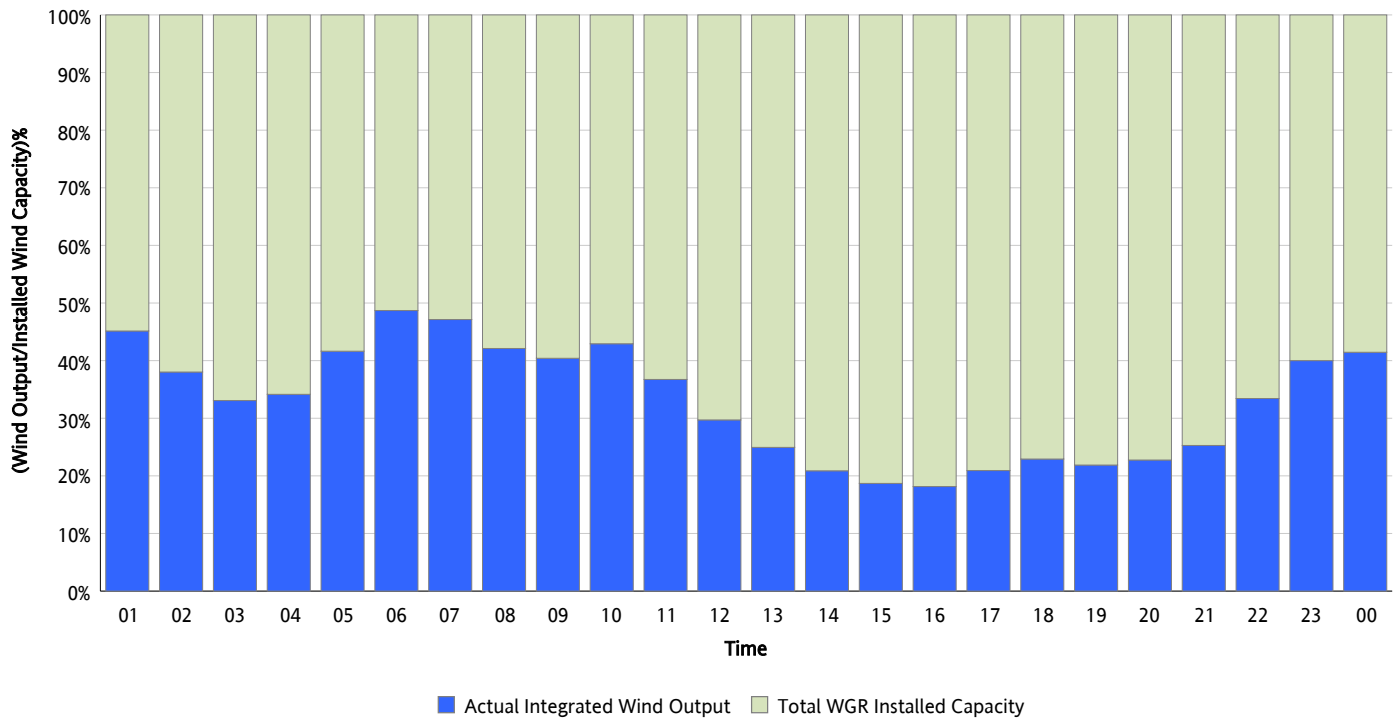
Hourly Average Actual Load vs. Actual Wind Output
01/13/2013



* Wind Record and Wind Max represent instantaneous values and the rest of the values are integrated over the hour

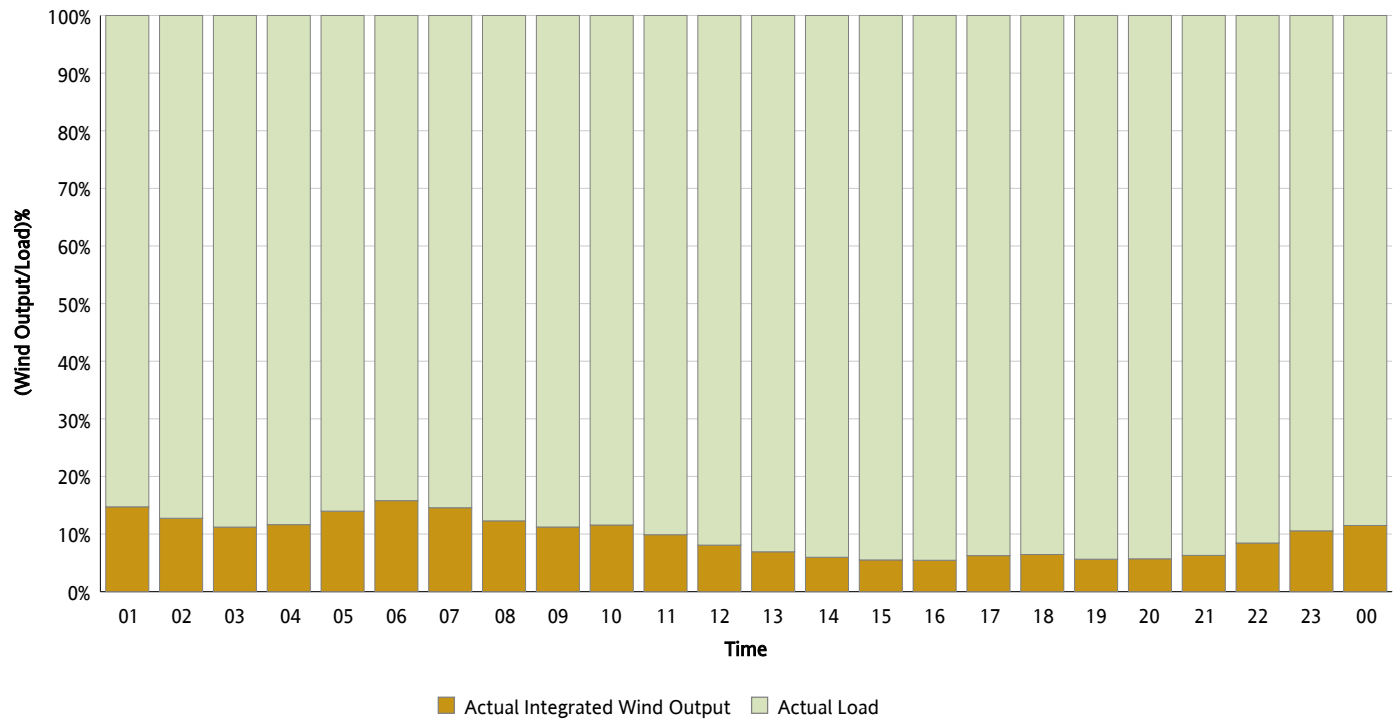
Actual Wind Output as a Percentage of the Total Installed Wind Capacity

01/13/2013



Actual Wind Output as a Percentage of the ERCOT Load

01/13/2013



ERCOT Load vs. Actual Wind Output

01/06/2013 - 01/13/2013

